



The OSE120 is perfectly suited for intense picking in a tough industrial environment. With excellent driving characteristics and the possibility for dual-pallet handling, it greatly improves productivity in the order picking process. Key words are cost efficiency and safety.



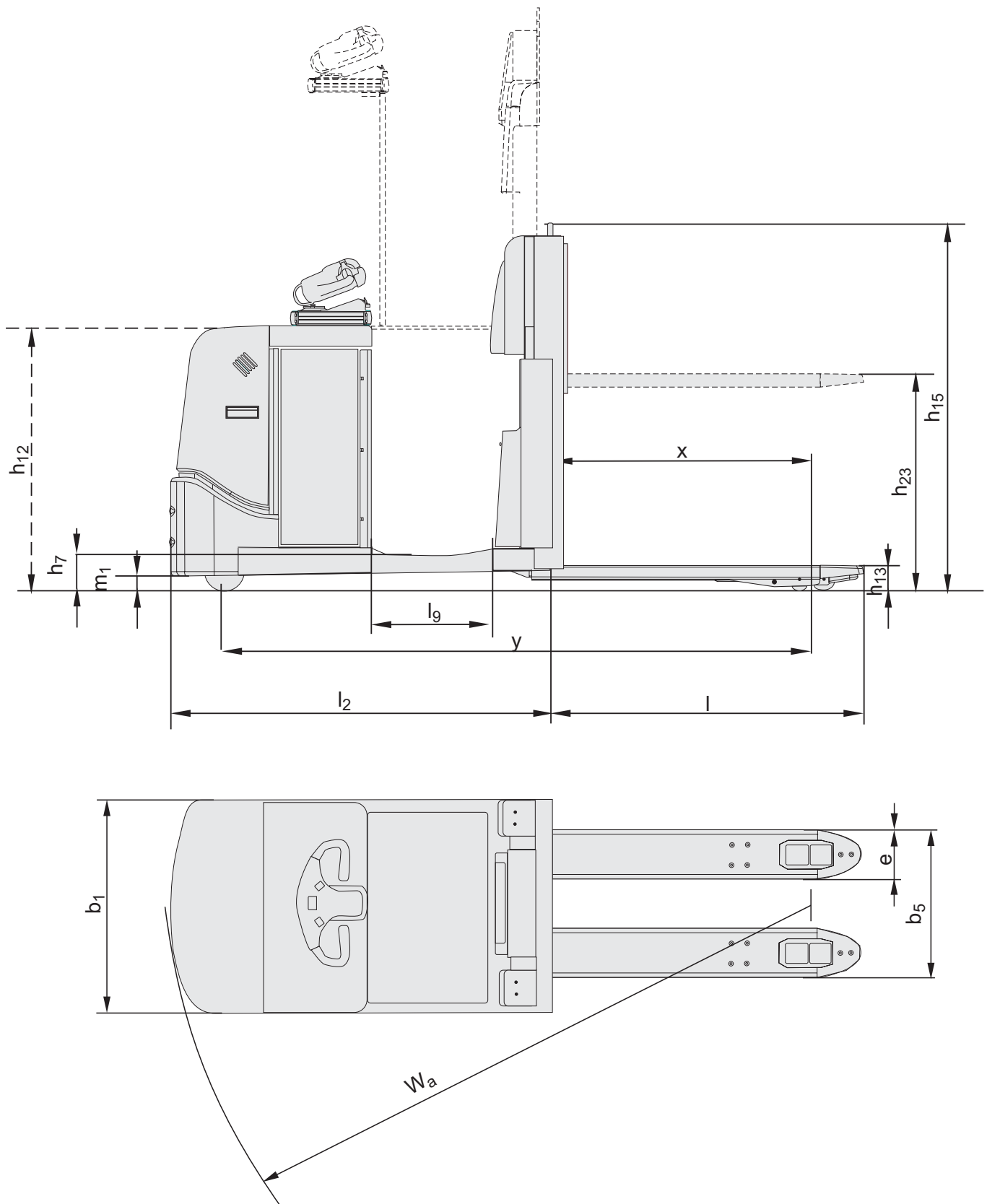
| Technical Details   |      | OSE120 / OSE120P              |
|---|------|-------------------------------|
| Power unit  |      | Electr. battery               |
| Operating type  |      | Stand on                      |
| Rated capacity  | kg   | 1200                          |
| Load centre   | mm   | 1200                          |
| Weight without battery, short chassis/long chassis                      | kg   | 1184/1263                     |
| Max. axle load castor wheels, without/with rated load,<br>short chassis |      | 407/302                       |
| long chassis  | kg   | 395/110                       |
| Max. axle load drive wheel, without/with rated load,<br>short chassis   |      | 545/562                       |
| long chassis  | kg   | 798/725                       |
| Max. axle load fork wheels, without/with rated load,<br>short chassis   |      | 246/300                       |
| long chassis  | kg   | 913/1138                      |
| Drive wheel, Vulkollan  | mm   | Ø250x75                       |
| Fork wheels, bogie, Vulkollan   | mm   | Ø85x75                        |
| Castor wheels, Vulkollan  | mm   | Ø150x75                       |
| Travel speed, without/with rated load                                   | km/h | 12/8 <sup>1)</sup>            |
| Lift speed, without/with rated load                                     | m/s  | 0.15/0.10                     |
| Lowering speed, without/with rated load                                 | m/s  | 0.15/0.15                     |
| Gradient, without/with rated load                                       | %    | 5/5                           |
| Service-/parking brake  |      | 1 stage electromagnetic brake |
| Drive motor/Intermittent rating   | kW/% | 2.5/60                        |
| Lift motor/Intermittent rating  | kW/% | 1.2/4.5                       |
| Battery (5h discharge)  | V/Ah | 24/200—600                    |
| Battery weight, min./max.   | kg   | 250/380                       |
| Steering system   |      | electronic                    |
| Speed control   |      | stepless                      |
| Steering arc  | °    | 200                           |

| Dimensions, mm  |  | OSE120 / OSE120P        |
|-----------------|--|-------------------------|
| x               | Back of fork to bogie wheel centre,<br>short/long support arms                                 | 858/973                 |
| y               | Wheel base,<br>short chassis, short/long support arms<br>long chassis, short/long support arms | 2042/2157<br>2128/2243  |
| h <sub>7</sub>  | Instep height  | 138                     |
| h <sub>12</sub> | Stand height, elevated   | 980 <sup>2)</sup>       |
| h <sub>13</sub> | Height of lowered fork   | 85                      |
| h <sub>15</sub> | Height of back rest  | 1370/2199               |
| h <sub>23</sub> | Total lift height  | 800                     |
| l <sub>2</sub>  | Truck length incl. back of fork, short/long chassis  | 1406/1492 <sup>3)</sup> |
| b <sub>1</sub>  | Chassis, width   | 790                     |
| s               | Fork thickness   | 70                      |
| e               | Fork width   | 180                     |
| l               | Fork length  | 1150—2350               |
| b <sub>5</sub>  | Width across fork, min./max.   | 520/570                 |
| m <sub>1</sub>  | Floor clearance under mast   | 23.5                    |
|                 | Turning radius   |                         |
| W <sub>a</sub>  | short chassis, short/long support arms<br>long chassis, short/long support arms                | 2271/2386<br>2357/2472  |
| l <sub>9</sub>  | Platform length  | 450                     |

1) OSE120P = 6 km/h with platform lifted above 500mm

2) Applies only to OSE120P. h<sub>7</sub> remains 138mm

3) Depending on battery compartment





- The new E-MAN steering concept is ideally suitable for picking as well as for pallet handling applications. Light, one hand operation increases the flexibility for the driver and the same time simplifies driving in the fork direction.
- For easy second level picking OSE120P with elevating platform, offers a design which optimizes the total picking cycle. Both efficiency and manoeuvrability increases as the operator always has the E-MAN handle within close reach.
- Dual-pallet handling, with fork lengths up to 2350 mm the OSE120 excels on the market of fork lifting order pickers.
- The performance of the OSE120 is first-rate. A travel speed of 12 km/h, together with high acceleration, increases the number of pick-ups. With our motor technology it is very easy to adjust top speed, acceleration and speed reduction to meet individual requirements.
- The BT POWERDRIVE system provides reliability and simplicity. CAN-bus technology means fewer parts and reliable transmission of data. A PIN code start up procedure offers higher operational safety by stopping unauthorised driving.

| Truck features                      | OSE120 | OSE120P |
|-------------------------------------|--------|---------|
| BT Powerdrive System                | S      | S       |
| Elevating platform                  | —      | S       |
| High performance models             | S      | S       |
| <b>Controls and instrument</b>      |        |         |
| Adjustable BT Control console       | O      | O       |
| Exterior lift/lower buttons         | O      | O       |
| Fingertip controls                  | S      | S       |
| Information display                 | S      | S       |
| Power/Electronic steering           | S      | S       |
| <b>Driving features</b>             |        |         |
| 200° steering                       | S      | S       |
| Automatic deceleration              | S      | S       |
| Electronic regenerative brakes      | S      | S       |
| <b>Safety features</b>              |        |         |
| BT Access Control                   | S      | S       |
| Driver detection system             | S      | S       |
| Programmable performance            | S      | S       |
| <b>Drivers compartment features</b> |        |         |
| Elevating picking shelf             | —      | O       |
| Folding seat                        | O      | —       |
| Low step-in                         | S      | S       |
| On-board data terminal mount        | O      | O       |
| Storage compartments                | O      | O       |
| Writing table                       | O      | O       |
| <b>Maintenance features</b>         |        |         |
| Easy access for maintenance         | S      | S       |
| Fault diagnosis facility            | S      | S       |
| <b>Battery management features</b>  |        |         |
| Battery change facility             | O      | O       |
| Battery status indicator            | S      | S       |

S = Standard feature

O = Optional feature

— = Not available



The product complies with the EC-directives



SS-EN ISO 9001, No. 003  
ISO 14001, No. M005

BT  
SE-595 81 Mjölby Sweden  
Tel: +46 (0)142 860 00  
Fax: +46 (0) 142 866 00  
Email: info@bt-forklifts.com  
www.bt-forklifts.com

